



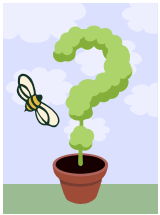
Grass Roots

www.cmcustomlawn.com

4151 S. 84 St. Omaha, NE 68127 402.738.1718

Volume 2009 Issue 6

Turf care question: Why do we spray for weeds while it is raining?



In late May, several of our clients called to ask why we applied weed spray while it was raining. We spoke to some of you but thought others might also be curious, so let's talk about what we call "rain-fast."

Rain-fast is a term we use to describe how quickly the products we use can be deemed effective in the face of irrigation. Some are rain-fast as soon as they dry. Others require longer periods of time. That said, all of the label statements are made in terms of optimum performance in field tests. The label on our workhorse product, Trimec Classic, says to wait 24 hours before irrigating; and yet we know that we get weed control with time frames far less than that. We leave instructions based on the label; but if we are on a job, we will complete it in the rain, short of a downpour, and get results. We will come back if the weeds sprayed do not die back in seven to ten days.

Do you have a turf care question? Call us or use the contact page of our website to send it to us. We look forward to hearing from you!

Play Ball! Enjoy your lawn all summer

Wow! June already. We will finish up our second round of pre-emergent with fertilizer and begin our insect control application this month.

School is out, and for those of you with children and grandchildren, it can mean more stress on the turf. Foot traffic has a significant impact on turf. Coupled with other stress factors, such as insignificant irrigation, heat stress, or poor mowing practices, it can lead to a less healthy stand of grass. It is helpful to vary the areas

of the yard that are used for recreation if you can. Our yards recovered from worn base spots, pitching areas and home plates; yours will too. After all, we keep our yards looking nice so we can enjoy them.

We have seen a few more dandelions this year. We do spray them as we see them, the effect being that we cause the flower to die and prevent the spread of more seeds. Our best control remains the fall weed sprays that we apply.

It has been a dry, and often, windy spring, so do not forget about irrigation. For the month of June, you can usually achieve adequate moisture with no more than three to four waterings. If you have problems with run-off, break your cycles into parts until you have eliminated the problem. Water running down the street does none of us any good. Call us if you have questions about water conservation. Rumor has it that down the road, water will make oil look cheap.

Please call us. Let us know what we can do to help you enjoy your lawn and landscape even more.



The Rain Gauge

For a normal month of June, your turf should receive approximately 1-1.5 inches of precipitation per week. Precipitation per week is the combined amount of Mother Nature's rain plus anything you add to it. Excessive watering will only waste water and promote unhealthy growing conditions in a variety of ways.

CM's Welcomes New Team Members

There are several new faces around CM's this year. We are pleased to introduce you to our newest crew members.

Joining our turf maintenance division are Derek Dodenhof and Josh Selvig. Mitchell McVicker is rounding out our fertilizer team. Our landscape division is pleased to have Gustavo Mena Luna, Kevin Person, Craig Buettner and Michael Black in the field. Many of you may remember Michael from previous summers with us. Michael recently received his engineering degree from Iowa State University along with a commission in the United States Air Force. Michael will be with us until he receives his orders later this summer.

Another personnel change coming in June involves Andy Szatko and Tim Bowman. Andy is transitioning to a sales associate/designer position. Tim, our hardscape division manager, will add the landscape division to his responsibilities. Tim has several years of landscape experience. This move will streamline our construction projects.



Reminders

1. Plant spring annuals.
2. Prune spring-flowering shrubs.
3. Inspect irrigation system.
4. Sign up for electronic newsletter at www.cmcustomlawn.com



Yard Sale Going On Now!

Phone: 402.738.1718
Fax: 402.614.2771
E-mail: admin@cmcustomlawn.com

CM's Custom Lawn & Landscape
4151 S. 84 St.
Omaha, NE 68127

PRESRT STD
U.S. POSTAGE
PAID
OMAHA, NE
PERMIT NO 446



SAVE
10%

MONTH-LONG YARD SALE
CM's Custom Lawn & Landscape
June 1-June 30

SAVE
10%

Take **10%** off your **entire purchase** of hardscape materials when you accept delivery by July 1, 2009. Offer is limited to "cash & carry" purchases of **in-stock** materials in our wholesale yard. Discount does not apply to special orders, contracts or delivery service.

Delivery service is available for a nominal fee.

Yard hours are Monday-Friday, 8 AM-4 PM, or by appointment .

Offer expires June 30, 2009



The finishing touch -



more than mulch



Your spring planting is finished and you've covered the ground with mulch to prevent weed growth and retain moisture. Are you really finished? Does your landscape have that polished look you've seen on television and in magazines? Hmm... something seems to be missing. Where are the other landscape elements?

A beautiful landscape is inviting. Incorporating materials such as boulders, flagstone, cobblestone and steps throughout a landscape can add texture and elevation, frame plant materials, and create seating areas and meandering paths.

Are you ready to finish the job? Our wholesale yard is open to the public and stocked with everything you need to complete your landscape. Call us today. Don't forget about the June special discount offer!