



# Grass Roots

www.cmscustomlawn.com

4151 S. 84 St. Omaha, NE 68127 402.738.1718

Volume 2009 Issue 11

## Don't stop now; the end of the season is in sight

While the early snow was somewhat of a surprise, it continued a pattern of timely turf irrigation for the year. With this last application, which we began the week of 10/19, we often encounter leaves on the ground. Leaves left on the ground can smother turf, leaving you with a thinner and less healthy lawn. Regardless of your method - mulch, rake, bag or our favorite, hire us - get the leaves off the turf. We will attempt to work with you as you try to clean up your turf. This is a problem that varies with different parts of the city. More established areas tend to have more trees. We will continue to use our best judgment on when to apply this application.

Please contact us if you have areas of concern. We would like to address them this season. If conditions prevent us from doing so, we will have them on the schedule for next season.

As with most of life, one needs to plan to be successful. The same goes for your lawn and landscape. Let us help you "pump it up," so to speak, to make your lawn the envy of the neighborhood.

Thanks for letting us work with you.



## Fall: Perfect for landscape projects

Many of us were stunned by the snow and cold temperatures of early October but here it is November and we're enjoying Autumn at last. Before you get ready to hibernate for the winter, we encourage you to consider one more landscape project.



Before



After

Our crews are hard at work, installing beautiful landscapes throughout the metro. Whether you are interested in adding hardscape features, trees, shrubs or perennials, Autumn is a great time of year

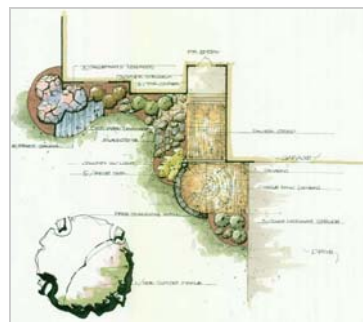
for installation or renovation.

Here is a perfect example of a hardscape project we completed this year. The retaining wall and surrounding turf was replaced with a planting bed, complete with a pondless waterfall and flagstone path. The homeowners elected to manage the plant materials on their own, thereby becoming actively involved in the renovation process.



We can't wait to see the final results of this collaborative effort.

Perhaps you're planning a project for next year. Our designers are already scheduling appointments with clients for winter design work. Meeting now allows a designer to see and walk a property before snow covers its unique features. Clients who contract for projects now will be at the top of the installation list come spring. Additionally, much of an installation's preparation can be accomplished in the fall, thereby distributing the financial commitment over a greater period while expediting completion once we reach



the spring planting season.

Regardless of the scope or timing of your landscape plans, CM's would love to be a part of them. If you have any questions about your landscape or the design process, please call us. We look forward to hearing from you.



## Reminders

1. Schedule fall turf and landscape clean up and maintenance.
2. Schedule bulb planting.
3. Visit the website to learn how you can protect your concrete from salt damage.
4. Mark perimeters and obstacles for snow removal crews.
5. Purchase gift certificates.

## A season for giving thanks

November. Just the word conjures up images of family, turkey, pumpkin pies and pick-up football games played amid the fallen leaves. For us at CM's it also means we are nearing the end of our primary season, and our thoughts are turning to planning for next year while we wait for snow. This time of year also gives us the opportunity to reflect on the year that is rapidly coming to an end. Did we fulfill our clients' needs and exceed their expectations? Did we improve the delivery of our services? Did we grow as individuals and as a company?

You, our clients, are the reason we exist. We owe our success to you. We are grateful for your enduring support and treasure the confidence you place in us. When we err, we appreciate the opportunity you give us to set things right. Your satisfaction is our goal.

So, with Thanksgiving rapidly approaching, we want to express our gratitude to you. Thank you for the privilege of serving you. To those of you who have referred your family and friends to us, an extra thank you for demonstrating your confidence in CM's. From the entire CM's family to yours, we wish you a Happy Thanksgiving.



## Rose care now will yield beautiful blooms next year



Many of you have first-hand experience with last spring's shrub rose dieback due to inadequate snow cover. November is the time to take preventive measures.

Regardless of when you prune your roses, you want to bury the bases of the plants with mulched leaves and grass. Remove any diseased leaves or stems from your roses and the surrounding area. Create a mulch of crushed leaves and grass and cover the stem of the shrub. The depth and size of your mound of mulch will vary depending on the size of the shrub; however, a mound of 8-10 inches should serve as an excellent insulation for the plant through the cold winter months. Once spring arrives and we pass the final freeze, simply remove the mulch and enjoy your beautiful roses for another growing season. This treatment works for any rose plant. Here are a couple of helpful hints:

1. It will be easier and less "sticky" if you prune back the shrub before adding your mulch mound.
2. Ask Santa for a new pair of gardening gloves for Christmas. You'll want them to protect your hands when you clean out the roses in the spring.



PRESRT STD  
U.S. POSTAGE  
PAID  
OMAHA, NE  
PERMIT NO 446

CM's Custom Lawn & Landscape  
4151 S. 84 St.  
Omaha, NE 68127  
Phone: 402.738.1718  
Fax: 402.614.2771  
E-mail: [admin@cmscustowlawn.com](mailto:admin@cmscustowlawn.com)